

Waterproof Panic Button for EC-i, ESL, Runner & infinity output

Specifications

Operation	1 Programmable Button
Wireless Range	Up to 500m Line of Sight
Frequency	916MHz
Modulation Type	GFSK
Protocol	infinity 2 Way Encrypted
Indication	Haptic & LED Feedback
Battery Type	1 x CR2032 Lithium <i>(non replaceable)</i>
Battery Life	Up to 5 Years
Operating Temperature	-20°C to 60°C
Environment Humidity	100% max
Dimensions	48mm x 44mm x 17mm
Ingress Protection	IP67
Functions	Programmable Arm, Disarm, Panic, Output Control & Delayed Press Options

Overview

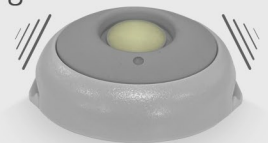
Function

Automatically pairs to 'infinity link' or 'infinity output' during learn procedure.

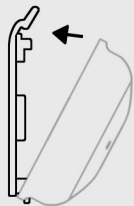
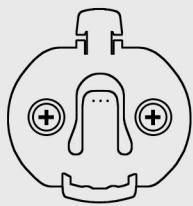
Optional 'Delayed Press' function to help prevent false pressing. See bottom of page for more information:

2 Way Feedback

Panic button will vibrate & display a green LED to indicate a successful control panel or infinity output operation.

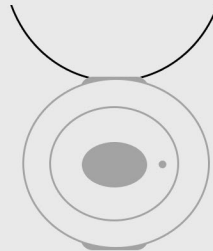


Accessories



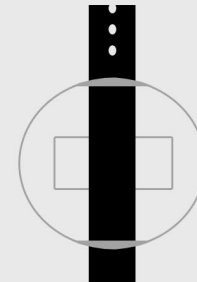
Clip in Base

With screw holes for wall mount or covert applications.



Nylon Necklace

For medical & other emergency applications.



Wrist Option

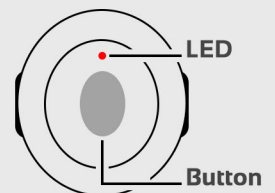
Locations for watch strap. (Strap not included. Requires 18mm x 1.5mm 'single pass' strap).

Default Programming

If the 'infinity panic' has been previously learnt into a system it will require defaulting before being learnt or re-learnt into a control panel or infinity output.

1. To default: Press & hold the button for 10 seconds (until the LED turns **SOLID RED**).
2. As soon as the LED is **SOLID RED**, release the button, then press the same button 5 times in quick succession. (The LED will fast flash orange during this part of the process).
3. A **GREEN LED** will flash momentarily to confirm that the default has completed successfully.

figure 1



Button Delay Options

The infinity panic can be programmed for '**Instant Press**', '**0.2sec Delay**' or '**0.5sec Delay**' as detailed below:

Warning: Changing the function will not work if the remote is communicating with a control panel or 'infinity output'. Make sure the remote is defaulted OR temporarily disconnect the 'infinity link' before proceeding.

1. To change the button delay time: Press & hold the button for 5 seconds (until the LED rapidly flashes **RED**).
2. As soon as the LED is rapidly flashing **RED**, release the button, then press the same button 5 times in quick succession. (The LED will fast flash orange during this part of the process).
3. A **GREEN LED** will flash momentarily to confirm that the default has completed successfully.

The moment that the function has changed the infinity panic will vibrate to indicate the new function as detailed below:

- 1 Vibration = 0.2sec Delay**
 2 Vibrations = 0.5sec Delay
 3 Vibrations = Instant Press

Learning into the EC-i Control Panel (consult control panel installation manual for advanced programming)

EC-i control panels have pre configured user slots to simplify the learning of wireless buttons/users. These are located from users 140 to 189 as shown in 'Pre-Configured User Slots' table below:

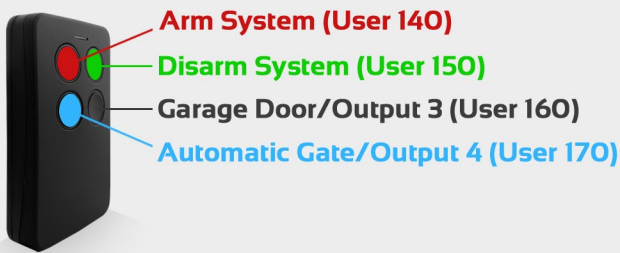
- Make sure you are in installer programming mode (default PROG 000000 ENTER) before continuing.
- Press PROG 18 ENTER followed by the User Number you wish to learn, then ENTER. Next press ENTER again to start the keypad beeps, indicating that the system is waiting to learn a remote button.
- Press the remote button you wish to learn and the keypad should stop beeping, indicating a successful learn.
- To learn another button, press the right or left arrows on the keypad to go to next or previous user slot, then press ENTER, or press PROG then ENTER to exit installer programming.

Pre-Configured User Slots Table (for EC-i Series only)

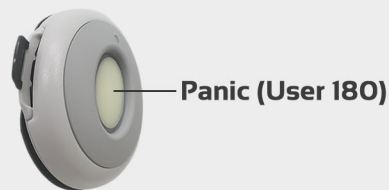


Arm Users 140 - 149	<p>Users 140 to 149 will ARM only</p> <p>Example: P 18 E 140 E E (learn beeps start) Press the remote button you wish to learn (learn beeps stop) This button will now ARM the system</p>
Disarm Users 150 - 159	<p>Users 150 to 159 will DISARM only</p> <p>Example: P 18 E 150 E E (learn beeps start) Press the remote button you wish to learn (learn beeps stop) This button will now DISARM the system</p>
Output 3 Users 160 - 169	<p>Users 160 to 169 will operate OUTPUT 3 & DISARM at the same time</p> <p>Example: P 18 E 160 E E (learn beeps start) Press the remote button you wish to learn (learn beeps stop) This button will now DISARM the system & control output 3 at the same time</p>
Output 4 Users 170 - 179	<p>Users 170 to 179 will operate OUTPUT 4 & DISARM at the same time</p> <p>Example: P 18 E 170 E E (learn beeps start) Press the remote button you wish to learn (learn beeps stop) This button will now DISARM the system & control output 4 at the same time</p>
Panic Users 180 - 189	<p>Users 180 to 189 will operate as a PANIC button</p> <p>Example: P 18 E 180 E E (learn beeps start) Press the remote button you wish to learn (learn beeps stop) This button will now perform a PANIC function</p>

Remote 1 Example (button colours are indicative only)



Remote 2 Example



Battery Low Reporting & Haptic Feedback

- P 7 E must be set to option 1 (infinity) to enable battery low reporting & for the remote to operate correctly.
- Haptic feedback is disabled when battery is low is reported due to the remote entering power save mode.
- Battery low will be indicated at 2.2V & under